

Library and Knowledge Services

Resources to support Radiographers

OpenAthens

NHS

Start your search with NHS OpenAthens



NICE National Institute for
Health and Care Excellence



The key to **unlocking access** to online resources. Self-register for an OpenAthens username and password using the QR code above or visit: openathens.nice.org.uk

BMJ Best Practice



A UK-based clinical decision support tool bringing together research and best practice covering a huge range of conditions. Sign in from a Trust computer or with your OpenAthens details. You can download the app to get fast access to clinical answers anywhere. <https://www.bmj.com/company/nhse/>

ClinicalKey®



A resource that provides access to **ebooks, journals, clinical overviews, procedure videos, images and more**. Sign in with your OpenAthens details and register for a personal account for full access. You can also download the app to get access on the go. <https://www.clinicalkey.com>

NHS Knowledge
and Library Services

NHS



**Direct access to information
and evidence to support
patient care**



The NHS Knowledge and Library Hub

Centrally funded for healthcare by the NHS #NHSKLHub

The NHS Knowledge and Library Hub has links to all the NHS resources available to you including **journals, ebooks, databases, online tools and more**. Select your Trust and sign in with your OpenAthens details using the QR code above or visit: <https://www.nhslincslibrary.uk/knowledge-and-library-hub/>



Library and Knowledge Services

Resources to support Radiographers



Health Libraries
Midlands
library catalogue

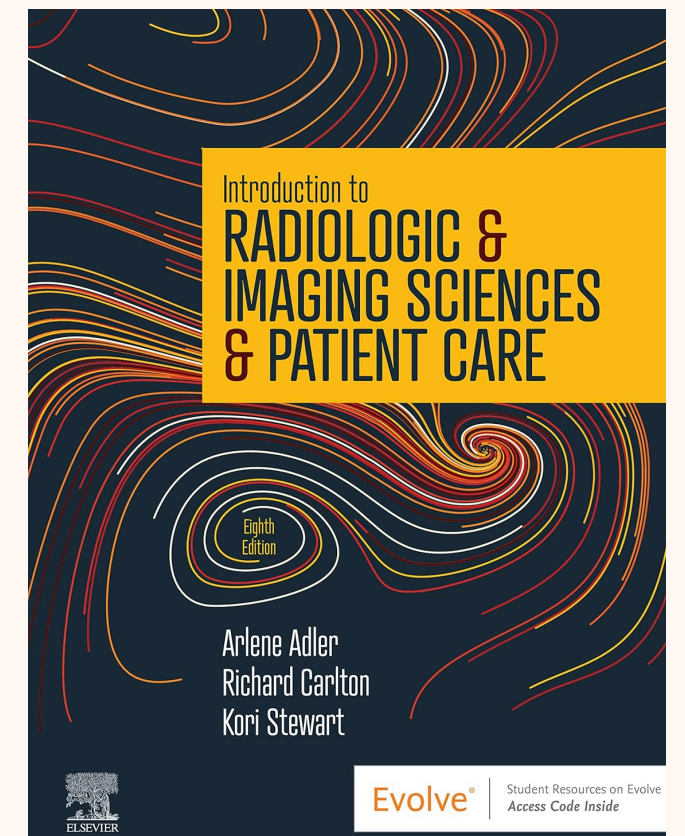
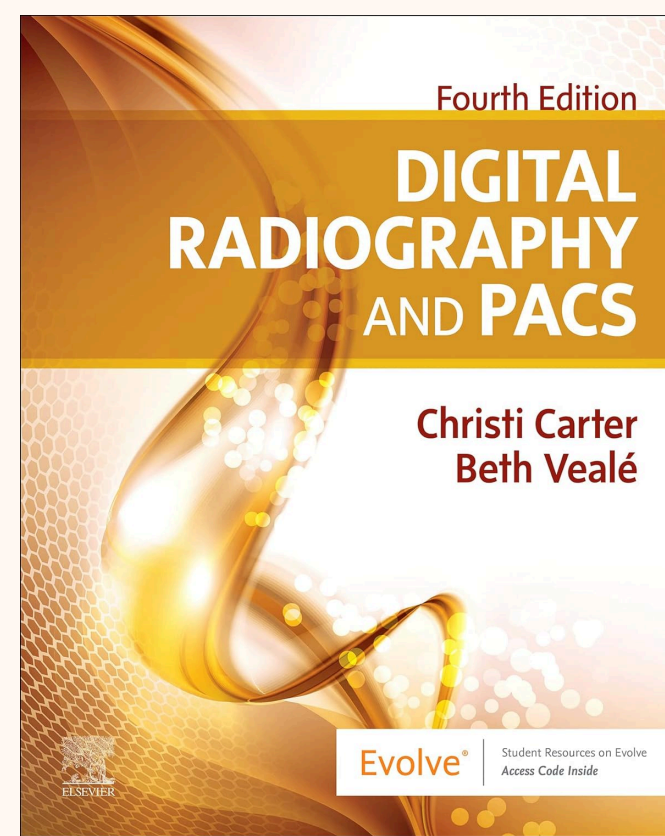
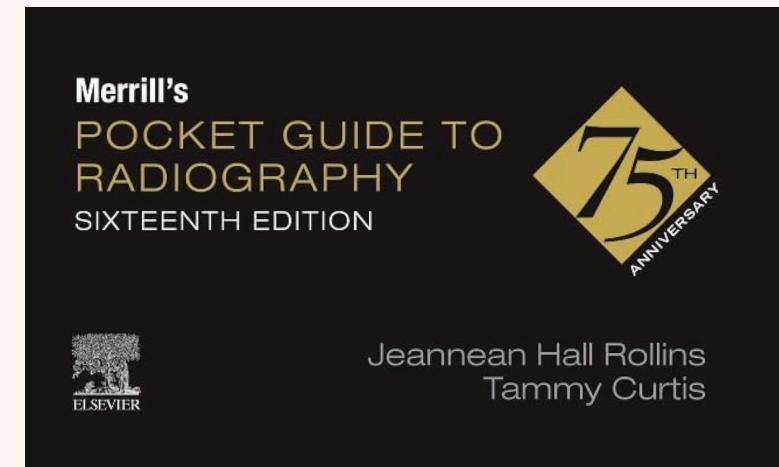
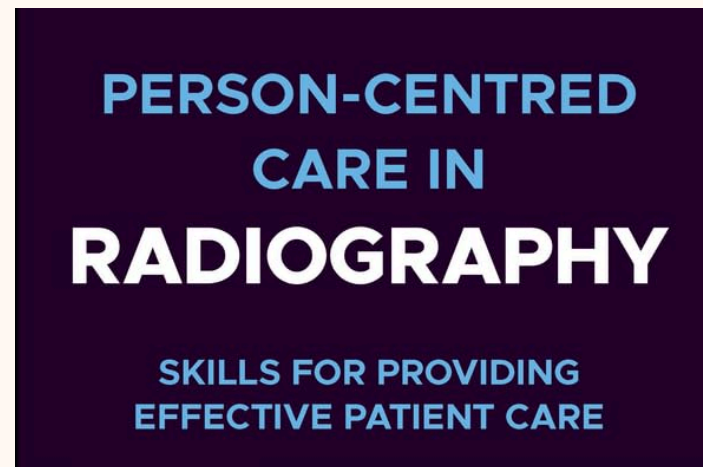


www.healthlibrariesmidlands.nhs.uk

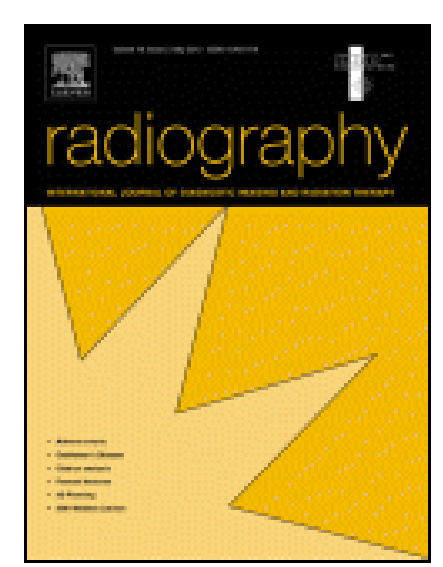
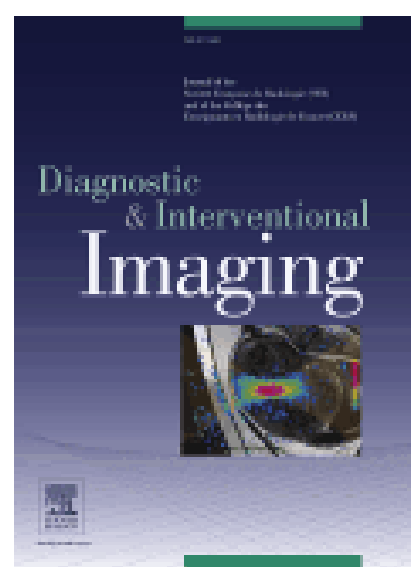
You have access to over 250 000 books from over 40 NHS libraries. Most books are 6 week loans and there are no fines! If you would like to borrow a book, please register here:

www.nhslincslibrary.uk/library-membership

If you are already registered to borrow books, log in to your account using your **Membership Number** and **Password**. If you have forgotten these email your local NHS library using the details at the bottom of this page.



You have access to **online journals** using your OpenAthens details. You can browse journals using the **NHS Knowledge and Library Hub**. Here are some of the journals available to you:



We provide **literature searches** to support patient care, service developments, management decisions, research or CPD.

Email ulth.clinical.librarian@nhs.net to request a search or for more information.



We produce regular bulletins on various topics:
www.nhslincslibrary.uk/bulletins

Email ulth.clinical.librarian@nhs.net to be added to bulletin mailing lists or if you would like a more personalised alert to be created.

If you have any questions about Library & Knowledge Services please email:

library.grantham@nhs.net
library.lincoln@nhs.net
library.pilgrim@nhs.net

For more information about our services go to:
www.nhslincslibrary.uk